



SHEFFIELD CITY COUNCIL

Report to Cabinet

Highways Committee

11

Report of: Executive Director, Place

Date: 10th March 2011

Subject: Smarter Choices for Travel to School Strategy

Author of Report: Martin Green (CYPS) 2735827 & John Bann (PLACE) 2736030

Summary:

The purpose of this report is to:

- Provide an update on progress with the implementation of Sheffield City Council's Smarter Choices for Travel to School Strategy which was approved by Cabinet in July 2009.
 - Outline future plans for work with schools to develop the Strategy.
 - Seek approval for the way forward.
-

Reasons for Recommendations:

There have been tangible successes to date as a result of implementing the Smarter Choices for Travel to School Strategy. The Council has been able to meet its statutory duty to promote sustainable travel to school. The positive environmental impact and benefits to children's health are evident and quantifiable.

The excellent joint working between Place and CYPS portfolios in funding and delivering this strategic work and in particular, the outstanding commitment of the School Travel Team should be particularly noted and welcomed given the success it has achieved, as should the corresponding involvement and support from parents, schools and governors.

Cessation of this work will result potentially in a failure of the Council to meet its statutory duty to promote sustainable school travel, a rise in the use of cars on the home to school journey with negative environmental consequences, an increase in child obesity and a higher risk of children being killed or injured on Sheffield's roads.

Recommendations:

Welcome the successes which have been achieved in promoting sustainable school travel in the City.

Support undertaking sustainable school travel in accordance with Scenario A as set out in paragraph 4.38.

Request officers seek alternative sources of funding to continue to develop the strategic projects and the services required to implement them, including encouraging the Community Assemblies to address issues of illegal parking and congestion around school entrances.

Background Papers: See Appendices

Category of Report: OPEN

Statutory and Council Policy Checklist

Financial implications
YES Cleared by:
Legal implications
YES Cleared by: Nadine Wynter DCX
Equality of Opportunity implications
YES Cleared by: Bashir Khan CYPS
Tackling Health Inequalities implications
YES
Human rights implications
NO
Environmental and Sustainability implications
YES
Economic impact
YES/NO
Community safety implications
YES
Human resources implications
YES
Property implications
NO
Area(s) affected
All areas of Sheffield
Relevant Scrutiny Board if decision called in
Culture, Economy and Sustainability
Is the item a matter which is reserved for approval by the City Council?
NO
Press release
NO

SMARTER CHOICES FOR TRAVEL TO SCHOOL STRATEGY

1.0 SUMMARY

1.1 The purpose of this report is to:

- Provide an update on progress with the implementation of Sheffield City Council's Smarter Choices for Travel to School Strategy which was approved by Cabinet in July 2009.
- Outline future plans for work with schools to develop the Strategy.
- Seek approval for the way forward

2.0 WHAT DOES THIS MEAN FOR SHEFFIELD PEOPLE

2.1 The delivery of the Smarter Choices for Travel to School Strategy contributes to Sheffield City Council's City of Opportunity priorities, in particular:

- Protecting and Enhancing the Environment
- A Better Life for Children and Young People
- Supporting People to be Healthy and Independent.

It achieves these objectives by:

- Promoting walking, cycling and public transport use within the school community
- Reducing congestion, especially around schools
- Creating safer roads, especially around schools
- Reducing Sheffield's carbon footprint through reduction in car use
- Improving health through increases in walking and cycling to school, and
- Improving air quality through reduction in car use.

3.0 OUTCOMES & SUSTAINABILITY

3.1 The Smarter Choices for Travel to School Strategy has been developed jointly between Place and Children and Young People's Service (CYPS). Successful implementation of the Strategy will ensure the Council meets its statutory duty regarding sustainable travel to and from school as set out in the Education and Inspections Act 2006.

3.2 The Strategy contributes to the aims of the Every Child Matters agenda in terms of children and young people staying safe and being healthy. Outcomes from delivering the strategy contribute towards National Indicators. These comprise:

- Reduced CO2 emissions
- Healthier children, staff and parents
- Improved school community links
- Better road safety skills
- Reduced road casualty statistics
- Better quality school travel facilities
- Reduced congestion

- Increased independent travelling.
- 3.3 Reducing the use of cars on the home to school journey is a key element of the Local Transport Plan involving the four South Yorkshire local authorities and South Yorkshire Passenger Transport Executive. The target for all South Yorkshire Schools is to prevent an increase in car use for journeys to/from school, maintaining it at 24.6% until 2011. (Sheffield has already surpassed this target and achieved 23.9%).

4.0 REPORT

Progress to date

- 4.1 Up to the end of March, 2010 the focus of school travel planning activity was to help and enable Sheffield's schools to develop and adopt a good quality school travel plan. 99.7% of students in local authority maintained schools are now covered by a School Travel Plan. By March 2010, 180 out of 189 (95%) Sheffield schools (including Independents) had a School Travel Plan, which compares well against the national figure of 91.3%. (A full list of schools with travel plans is included in Appendix A/B). It is not a statutory requirement for all schools to have a Travel Plan.
- 4.2 Having achieved very high coverage of school travel plans the focus of school travel planning activity has shifted to working with schools to ensure that they continue to implement the plan and working intensively with a smaller number of schools to encourage and enable sustainable and active travel on the school run. Appendix C includes details of the programme of projects being delivered in 2010/11. The main activities are:
- School Travel Activity Reward Scheme (STARS).
 - Travel 4 Life
 - Bike It
 - Walk Once A Week (WoW) and Walk to School Month
 - Engineering and traffic regulation
- 4.3 All schools with a Travel Plan are assessed annually using the School Travel Activity Reward Scheme (STARS). The scheme considers consultation, classroom and curriculum, promotion and publicity, measures and initiatives, partnership working and the effort and enthusiasm of each school. After the discussion the schools update their action plan for the following year. During the 5 years that the schools have been reviewed they are now receiving higher STARS, with one school achieving a Gold STAR. This demonstrates the value of STARS as a way of maintaining the commitment and effort of many schools to promote active travel. Please note Appendix D for the most recent STARS results.
- 4.4 All STARS schools are invited to the annual award ceremony to acknowledge and celebrate their commitment. Over 150 children and teachers attended the award ceremony on 15 July 2010 with 103 schools receiving awards.

- 4.5 School Travel Plans were publicised this summer within the 'Your Sheffield' magazine circulated to all Sheffield households. This aims to raise awareness of the help and incentives available to encourage sustainable and active travel to school.
- 4.6 In addition to STARS, some schools with particularly high car use or within Sheffield Primary Care Trust's Enhanced Public Health Programme areas have received more focused support in the form of 'Travel4Life'. 'Travel4Life' is an intensive project currently working in 9 schools to promote active travel. The project has been funded by Sheffield Let's Change4Life. Curriculum sessions, including external theatre groups and poets, have been delivered in all classes in the selected schools to promote the environmental and health benefits of walking and cycling. Work extends across the whole school community to ensure parents and staff are aware of the benefits of active travel. The results have been very encouraging, showing a reduction in car use on the school run of over 20% and a similar scale of increases in walking (see Appendix E for further details). Travel4Life will be rolled out in a further 12 schools in the academic year 2010/11. This is supported by funding from the Sheffield Lets Change4Life Programme.
- 4.7 Another project which works intensively with schools is 'Bike It'. 'Bike It' is a national project run by the national charity Sustrans. 'Bike It' focuses on helping children get fit and healthy by teaching them the skills they need to cycle safely and responsibly. It involves talking and listening to parents, teachers and children, then running a year-long programme of school projects, training, and fun events to get the whole school community cycling together. The first 'Bike It' officer for Sheffield started in 2008 and a second one, funded by the Sheffield let's Change4Life Programme, started in 2009. These 2 'Bike It' officers are now working in 30 Sheffield schools. The project shows a marked reduction in car use over the first twelve months and big increases in cycling and walking at 'Bike It' schools. (See Appendix F for data.)
- 4.8 A bike pool of 24 cycles has been funded by the Sheffield Let's Change4Life Programme and has been placed in 4 'Bike It' schools in Sheffield. These are Hinde House Primary, Acres Hill Primary, Pipworth Primary and Lower Meadows Primary. The schools were identified by Bike It Officers on the basis that students in those schools were excluded from Bike It activities as they did not own cycles. The bike pool is extending participation in active travel. A further forty bikes will be added to the pool early in 2011 and will be available at an additional 6 schools.
- 4.9 'Walk once a Week' (WoW) is a scheme that promotes walking, and cycling within a school community on a chosen day each week. At the end of each term children who have walked or cycled every WoW day receive a collectable foot badge designed by children in Sheffield. More than 3000 primary school pupils took part in the National Walk to School campaign during October 2010 with hundreds entering our design a t-shirt competition. Both schemes resulted in many extra journeys to school being made on foot or by bike instead of the car.

- 4.10 Engineering schemes around schools have been undertaken to encourage active travel to school. Examples of schemes completed to date include lockers for walkers and cyclists; secure cycle storage; new or improved paths; improved lighting in school grounds; redesigning school fences to improve access and road markings to improve safety of pupils in the vicinity of cars. School Travel Advisers have been working with all the new Building Schools for the Future & PFI projects as a School Travel Plan is a requirement of the planning application. 11 primary schools are expanding and their Travel Plans will be updated to reflect changes in any travel and transport issues. For details of schemes in 2010/11 see Appendix C.
- 4.11 Car parking and congestion at school entrances can jeopardise the safety children outside school. This issue has been highlighted through school travel plans from parents and governors as a barrier to walking and cycling to school. Members present at the Culture, Economy and Sustainability Scrutiny Committee of 2 November advised robust action and further work in this area. Traffic Regulation Orders (TROs) are due to be put in place outside the following 6 schools with high levels of illegal parking: Ballifield, Southey Green, Greenhill, Handsworth Grange, Bankwood and Carfield. This will enable civil enforcement officers to issue Penalty Charge Notices. Levels of illegal parking outside those schools will be monitored. If the scheme is deemed successful in reducing illegal parking, it is proposed that individual community assemblies will take responsibility for expanding this approach to schools in their area, using their transport block allocation funding.

Current School Travel Patterns

- 4.13 The annual School Census measures how children and young people travel to school. Whilst this is a national method of data collection, it is far from ideal, as it surveys children about their travel behaviour in the middle of winter, when walking and cycling are likely to be lower than the average across the school year and car use higher. For these reasons, the School Census has been augmented by additional 'hands-up' survey data.
- 4.14 The table below shows the school census data for car use on the journey to school over recent years (the figures include car share and taxi). It also shows our Sheffield targets for reduced car-based journeys to school (figures in brackets).

	2007 actual	2008 actual	2009 actual (target)	2010 actual (target)	2011 (target)
Primary	35.9%	35.5%	35.1% (35%)	33.6% (34.5%)	(34%)
Secondary	10.7%	11.9%	12.5% (10.7%)	12.4% (10%)	(9.5%)

All schools	25.4%	25.5%	24.8% (24.8%)	23.9% (24.2%)	(23.7%)
--------------------	-------	-------	------------------	------------------	---------

4.15 Sheffield is currently achieving its target reduction in car journeys to school across all schools and the 2011 target for primary schools has been achieved a year early. Unfortunately the car use in secondary schools has remained at nearly the same level as last year. However, overall car use in all school has dropped by 1.5% over 3 years. These reductions in car use, whilst small, represent a reversal of long-term trends where car use on the school run had been steadily increasing over previous decades.

4.16 There is strong evidence of school travel plans contributing to a reduction in car use. More than 4% more children walk to school in schools with an established School Travel Plan adopted in 2005 or 2006 than in schools adopting a plan at a later date.

Links to Community Assemblies and other projects

4.17 Implementing the strategy directly links with the Sheffield Let's Change4Life Programme and the reducing obesity agenda. It will help to reduce health inequalities particularly in children and young people as walking and cycling to school become more embedded in people's daily lives. The school travel planning projects contribute towards more active lifestyles at relatively low cost.

4.18 The Smarter Choices for Travel to School Strategy sits alongside other important initiatives within Children's and Adult Services. These include projects to promote positive behaviour on mainstream buses to and from school and to develop independent travel for children, young people and adults with learning difficulties and/or disabilities.

4.19 The 'Indetravel' project has been running since 2007 and trains children and young people to make the home school or college journey independently. Young people with learning difficulties and/or disabilities can become heavily reliant on support and lacking in the skills they need to access educational and social opportunities which would otherwise enable them to make a more successful transition to adulthood. The inability to travel independently is often the most significant barrier to progress. The earlier they learn how to travel independently the more likely it is that they will go on to lead full, happy and healthy lives.

4.20 A scheme called 'Get Going' has been developed to ease the progress towards full independence with the introduction of gradual steps and the use of 'pick up points' for minibuses. 'Get Going' has helped to break down resistance from concerned parents and carers and replace it with confidence and co-operation. One of the key benefits of independent travel is that it will reduce the amount of taxis and minibuses needed for the home to school journey as young people walk, cycle or use public transport.

- 4.21 For vulnerable adults eligible for travel assistance a 'Travel Solutions Team' has recently been established within Communities to help this group of people manage their Self Directed Support budgets and make the best travel choices. Independent travel training is a key part of the team's work and the advantages of a joint approach in delivering 'Indetravel' and the work of the Travel Solutions Team are currently being explored
- 4.22 The North East Community Assembly has given £15,000 to help the team deliver its Travel4Life project in an additional six schools in their area and £10,000 to expand the number of Bike It schools in their area. Officers from Place and CYPs will be approaching all Community Assemblies to support delivery of the programme and the aspirations of the Smarter Choices for Travel to School Strategy, including parking enforcement measures as discussed above.
- 4.23 Arising from the work with children and parents are issues and problems that inhibit walking and cycling to school. Based on this in-depth consultation, Community Assemblies will be presented with possible schemes to improve the school travel infrastructure in their area. They may choose to consider these schemes to improve school transport as part of their transport block allocation funding.
- 4.24 The Strategy also complements work in the Eco and Healthy School programmes and promotes the travel part of these initiatives. The healthy schools team ensures that all schools have an active travel plan before they are awarded Healthy Schools status. The School Travel Plan fits with the travel and transport doorway of the Sustainable Schools and all schools are targeted to be sustainable school by 2020. Again travel is one of the themes within Eco Schools and the Travel Plan can be used to help gain Eco School status.
- 4.25 The Strategy sits within the framework of the South Yorkshire Local Transport Plan and the business planning processes of South Yorkshire Passenger Transport Executive (SYPTe)

Future Plans: 2011/12 and beyond

- 4.26 The school travel programme is currently funded from a variety of sources, chiefly the Area Based Grant (ABG), augmented by Local Transport Plan (LTP), Sustrans and Sheffield Let's Change4Life. The latter funding source ends in March 2011. All the other funding sources face an uncertain future. So too, therefore, do school travel plans and smarter choices for travel to school programme.
- 4.27 To continue achieving reductions in car use and increases in sustainable and active travel to school would require existing levels of resources to be maintained. This would deliver:
- STARS reviews at approximately 120 schools and host the STARS award ceremony for successful schools
 - Travel4Life in 12 schools
 - WoW across all primary schools that wish to participate

- Walk to School Month promotion
- 20 walking buses and establishing new routes
- Provide Y6 transition work
- Support to general school queries
- Assistance to colleagues on new build schools and expansions
- Progress sustainable travel engineering schemes
- Strong links with other initiatives and linked areas of work
- Curriculum work in 10 secondary schools

From recent experience, this level of activity would ensure that the City Council meets its obligation to keep the Smarter Choices for Travel to School Strategy up to date and continues to deliver reductions in car use on the school run and increases in people choosing active and sustainable means of travel.

Relevant Implications

- 4.28 Delivery of the home to school / school travel plan strategy is undertaken by the Transport Planning team within the Transport & Highways Division, guided by the cross-portfolio School Travel Steering Group. This not only ensures close partnership working between Place and CYPs but also enables strong daily co-operation with the School-related “Education Training and Publicity” work undertaken in the Road Safety team. There are currently four School Travel Advisors posts. One of these posts is already an unfilled vacancy. The recommended way forward is to retain three full time school travel advisers.
- 4.29 The implementation of the Smarter Choices for Travel to School Strategy has ongoing funding and resource implications. Since April 2009 the funding for the Strategy has been via the Area Based Grant (ABG). In 2010/11 the strategy has been largely protected from ‘in-year’ reductions to ABG made nationally and an allocation of £72,000 is included in the base budget for Transport and Highways for 2011/12.
- 4.30 The preferred way forward for sustainable travel requires funding of approximately £78,000 (and recognises a reduction of £20,000 against this year’s commitment). The additional £6,000 needed to supplement the £72,000 can be accommodated within the current budget allocated to the Transport Planning team.
- 4.31 If the Council wishes to continue delivering activities under the Smarter Choices for Travel to School Strategy beyond 2011/12, an alternative means of providing £80,000 will need to be found. Approaches to the Schools Forum and Community Assemblies will be considered among other options. Added to this the possibility of Sheffield taking on a South Yorkshire strategic lead may provide access to sources of sub regional funding to support sustainable travel initiatives.

Bike It

- 4.32 Bike It is currently funded from LTP (£20,000 a year), Sustrans (£40,000 a year) and Sheffield Let’s Change4Life (£60,000 a year) and £10,000 in 2010/11 from North East Community Assembly. Sustrans has reviewed the costs of Bike It which has reduced from £60,000 per

Bike It post (which includes promotional events, materials and incentives) to £50,000 with effect from April 2011. Sustrans has agreed to cover most of the cost of the two Sheffield Bike It officers for the first four months of 2011/12, supplemented by a £6,000 contribution from the Sheffield Let's Change 4 Life Programme.

- 4.33 Two further funding streams are being explored to secure the future of Bike It beyond July 2011. Bike It will be included within the Sheffield City Region bid to the Local sustainable Transport Fund (LSTF). Sustrans is also pursuing with the Department for Transport a separate, national bid to the LSTF for Bike It. It is also proposed to make a bid to the South Yorkshire Strategic Central Pot (Local Transport Plan) to continue to fund Bike It and to expand it to other South Yorkshire districts, as part of the draft emerging South Yorkshire Cycle Strategy. Given the success of this project in reducing car use, the aim would be to maintain current levels of Bike It in Sheffield. It is also proposed that all Community Assemblies are invited to fund Travel4Life and Bike It school travel activity using their Local Transport Plan allocations, to increase the intensity of project delivery in their area.
- 4.34 It is a legal requirement that Sheffield City Council complies with the Education and Inspections Act 2006. The Act sets out the duty of local authorities to promote sustainable modes of travel, specifically to:
- Prepare for each academic year a document containing their strategy to promote the use of sustainable modes of travel to meet the school travel needs of their area ("a sustainable modes of travel strategy"),
 - Publish the strategy in such manner and by such time as may be prescribed, and
 - Promote the use of sustainable modes of travel to meet the school travel needs of their area.
- 4.35 An Equality Impact Assessment of the project has been carried out. The project meets with Sheffield City Council's equal opportunities policy criteria in terms of providing access to environmentally sustainable modes of transport to all children and young people.

5.0 ALTERNATIVE OPTIONS CONSIDERED

- 5.1 Two alternative scenarios to the recommended one set out in section 4 have been considered:
- 5.2 Alternative Scenario A - Future wholesale cessation of ABG funding allocations in future would, in the absence of other funding sources, halt the roll out of planned activity on sustainable travel in schools. Support for schools to maintain and deliver their school travel plans would not be available and the progress on sustainable travel to school achieved so far would reduce or reverse. All school travel initiatives within schools, including the Travel4Life project, would be stopped and the impact of the Smarter Choices Strategy on future travel behaviour

would be severely limited. It is highly likely that a majority of schools would not actively develop and implement their school travel plan. Sheffield would gain a poor reputation for programme delivery and National, LAA and LTP indicators and priorities will be affected

5.3 Alternative Scenario B - If the recommended level of resource was augmented further by appointing a Home to School Transport Officer this would enable:

- Update and maintain the Getting to School website
- Update and review Sustainable Modes of Travel to School Strategy
- Assess the travel needs of young people and provide information to parents through consultation
- Implement and deliver the strategy

6.0 REASONS FOR RECOMMENDATIONS

6.1 There have been tangible successes to date as a result of implementing the Smarter Choices for Travel to School Strategy. The Council has been able to meet its statutory duty to promote sustainable travel to school. The positive environmental impact and benefits to children's health are evident and quantifiable.

6.2 The excellent joint working between Place and CYPS portfolios in funding and delivering this strategic work and in particular, the outstanding commitment of the School Travel Team should be particularly noted and welcomed given the success it has achieved, as should the corresponding involvement and support from parents, schools and governors.

6.3 Cessation of this work will result potentially in a failure of the Council to meet its statutory duty to promote sustainable school travel, a rise in the use of cars on the home to school journey with negative environmental consequences, an increase in child obesity and a higher risk of children being killed or injured on Sheffield's roads.

7.0 RECOMMENDATIONS

7.1 Welcome the successes which have been achieved in promoting sustainable school travel in the City.

7.2 Support undertaking sustainable school travel activity in 2011/12 in accordance with the scenario set out in paragraphs 4.27 to 4.30.

7.3 Request officers seek alternative sources of funding to continue to develop the strategic projects and the services required to implement them, including encouraging the Community Assemblies to address issues of illegal parking and congestion around school entrances.

Sheffield City Council Maintained Schools

Appendix A

Pupil Numbers

Primary*	39298
Secondary*	28166
16+*	2626
Total	70090

Without Travel Plans **No STP** **With STP**

Bents Green	146
Mossbrook	79
Primary Inclusion Unit	0
Total	225

69865 %students with STP 99.7%

Independents

With Travel Plans

Ashdell	113
Birkdale	796
Mlynhurst	184
Sheffield High School	1008
Westbourne	322
Others	359
Total	2782

Without Travel plans

Al-Mahad-Al-Islam	76
Bethany	63
Emmaus	17
Handsworth Christian	116
Jamia Al Huda	87
Paces	0
Total	359

With STP

2423 %students with STP 87.1%

Total Maint & Ind **72872**

Total students with STP

72288 Total %students with STP 99.2%

*2008 Census data
2009 EduBase data

Schools with Travel Plans

SCC Nursery	3
SCC Primary	134
SCC Secondary	28
SCC Special	10
Independents	5
Total	180

Without Travel plans

SCC Nursery	0
SCC Primary	0
SCC Secondary	0
SCC Special	3
Independents	6
Total	9

%schools with STP 95.2%

Appendix B

School Name	Adopted
Abbey Lane Primary School	2007/03
Abbeydale Grange School	2005/03
Abbeydale Primary School	2010/03
Acres Hill Primary School	2007/03
All Saints Catholic High School	2005/11
Angram Bank Primary School	2007/03
Anns Grove Primary School	2005/03
Arbourthorne Primary School	2005/03
Ashdell Preparatory School	2010/03
Athlestone Primary School	2007/03
Ballifield Primary School	2007/03
Bankwood Primary School	2005/11
Beck Primary School	2006/03
Beighton Nursery/Infant School	2008/03
Birkdale School	2008/03
Birley Community College	2007/03
Birley Community Nursery	2007/03
Birley Primary School	2007/03
Birley Spa Primary School	2005/11
Bradfield Dungworth School	2009/03
Bradfield Secondary School	2010/03
Bradway Primary School	2005/11
Brightside Nursery Infant School	2006/03
Brook House Junior School	2005/03
Broomhall Nursery	2009/03
Broomhill Infant School	2006/03
Brunswick Primary School	2007/03
Byron Wood Primary School	2008/03
Carfield Primary School	2006/03
Carter Knowle Junior School	2008/03
Charnock Hall Primary School	2006/03
Chaucer Business & Enterprise College	2006/11
City School	2009/03
Clifford Cof E Infant School	2007/03
Coit Primary School	2008/03
Concord Junior School	2007/03
Deepcar St John Junior School	2006/03
Dobcroft Infant School	2005/11
Dobcroft Junior School	2006/03
Dore Primary School	2007/11
Ecclesall Infant School	2007/03
Ecclesall Junior School	2007/11
Ecclesfield Primary School	2006/03
Ecclesfield Secondary School	2010/03
Emmanuel CE/M Junior School	2009/03
Emmaus Catholic & C of E School	2008/03
Fir Vale Secondary School	2007/03
Firs Hill Primary School	2005/03
Firth Park Secondary School	2005/03
Forge Valley Secondary School	2010/03
Fox Hill Primary School	2007/03
Gleadless Primary School	2005/11
Grace Owen Nursery School	2010/03
Greengate Lane School	2006/03

Appendix B

School Name	Adopted
Greenhill Primary School	2006/11
Greenlands Junior School	2006/03
Greenlands Nursery Infant School	2006/03
Grenoside Primary School	2005/11
Greystones Primary School	2006/03
Halfway Junior School	2007/03
Halfway Nursery/Infant School	2009/03
Hallam Primary School	2005/03
Handsworth Grange Community Sports Coll	2008/11
Hartley Brook Primary School	2008/03
Hatfield Primary School	2006/03
Heritage Park Secondary School	2005/11
High Green Primary School	2006/11
High Storrs Secondary School	2007/03
Hillsborough Primary School	2009/03
Hinde House Primary Phase	2005/03
Hinde House Secondary Phase	2005/03
Holgate Meadows School	2010/03
Holt House Infant School	2006/03
Hucklow Primary School	2007/03
Hunters Bar Infant School	2007/03
Hunters Bar Junior School	2006/03
Intake Primary School	2006/03
King Ecgbert Secondary School	2005/03
King Edward VII Secondary School	2010/03
KS3 Access & Inclusion Unit	2006/03
Limpsfield Junior School	2008/03
Longley Primary School	2008/03
Lound Infant School	2006/11
Lound Junior School	2010/03
Lowedges Primary School	2008/03
Lower Meadow Primary School	2007/03
Lowfield Primary School	2005/11
Loxley Primary School	2007/03
Lydgate Infant School	2007/03
Lydgate Junior School	2007/03
Malin Bridge Primary School	2009/03
Manor Lodge Primary School	2007/03
Mansel Primary School	2006/03
Marlcliffe Primary School	2006/03
Meadowhead Secondary School	2005/11
Meersbrook Bank Primary School	2006/03
Meynell Primary School	2006/03
Monteney Primary School	2005/11
Mosborough Primary School	2006/11
Mundella Primary School	2007/03
Myers Grove Secondary School	2008/03
Mylnhurst Catholic Prep School & Nursery	2009/03
Nether Green Infant School	2005/03
Nether Green Junior School	2005/03
Netherthorpe Primary School	2010/03
Newfield Secondary School	2005/11
Nook Lane Junior School	2006/03
Norfolk Park Primary School	2006/03

Appendix B

School Name	Adopted
Norfolk Primary School	2005/03
Norton Free C of E Primary School	2005/03
Notre Dame Catholic High School	2006/03
Oakwood Special School	2010/03
Oughtibridge Primary School	2007/03
Owler Brook Nursery Infant School	2005/11
Parkwood High School	2005/11
Parson Cross CE Primary School	2007/03
Phillimore Community Primary School	2010/03
Pipworth Primary School	2008/03
Porter Croft C of E Primary School	2006/11
Prince Edwards Primary School	2006/03
Pye Bank C of E Primary School	2005/03
Rainbow Forge Primary School	2005/11
Reignhead Primary School	2007/03
Rivelin Primary School	2007/11
Rowan Primary School	2008/03
Royd Infant School	2009/03
Sacred Heart Catholic Primary School	2006/03
Seven Hills School	2010/03
Sharrow Primary School	2010/03
Sheffield High School	2006/11
Sheffield Park Academy	2008/03
Sheffield Springs Academy	2008/03
Shooters Grove Primary	2009/03
Shortbrook Primary School	2009/03
Silverdale Secondary School	2006/03
Southey Green Primary School	2007/03
Spring Lane College	2009/03
Springfield Primary School	2010/03
St Ann's Catholic Primary School	2008/03
St Catherine's Catholic Primary School	2007/03
St John Fisher Catholic Primary School	2010/03
St Joseph's Catholic Primary School	2006/11
St Marie's Catholic Primary School	2006/03
St Marys Catholic Primary School	2007/03
St Marys CE Primary School	2008/03
St Patrick's Catholic Primary School	2007/03
St Theresa Catholic Primary School	2008/03
St Thomas More RC School	2007/11
St Thomas of Canterbury Catholic Primary School	2007/03
St Wilfrid's Catholic Primary School	2006/03
Stannington Infant School	2009/03
Stocksbridge High School	2006/11
Stocksbridge Infant School	2006/03
Stocksbridge Junior School	2010/03
Stradbroke Primary School	2007/03
Talbot Special School	2005/11
Tapton School	2006/03
Tinsley Junior School	2008/03
Tinsley Nursery/Infant School	2010/03
Totley All Saints C of E Primary School	2005/03
Totley Primary School	2005/11
Valley Park Primary School	2005/03

School Name**Adopted****Appendix B**

School Name	Adopted	
Walkley Primary School	2007/03	
Watercliffe Meadow Primary School	2010/03	
Waterthorpe Infant School	2008/03	
Westbourne School	2010/03	
Westfield Secondary School	2006/11	
Westways Primary School	2005/11	
Wharnccliffe Side Primary School	2006/03	
Whiteways Junior School	2007/03	
Wincobank Nursery Infant School	2005/11	
Windmill Hill Primary School	2006/03	
Wisewood Primary School	2008/03	
Wisewood Secondary School	2006/03	
Woodhouse West Primary School	2006/03	
Woodseats Primary School	2006/03	
Woodthorpe Primary School	2005/11	
Woolley Wood Primary School	2007/03	
Wybourn Primary School	2005/03	
Yewlands Secondary School	2006/11	
Busk Meadows Infant School	2005/11	School Now Closed
Myrtle Springs Secondary	2005/03	School Now Closed
Oakes Park Special School	2006/11	School Now Closed
Sharrow Junior School	2006/03	School Now Closed
Shirecliffe Junior School	2005/03	School Now Closed
Watermead Infant School	2005/11	School Now Closed
Wybourn Nursery School	2005/03	School Now Closed

SchoolName	2006	2007	2008	2009	2010
Abbey Lane Primary			4		
Abbeydale Grange Secondary	2	1	0	2	3
Acres Hill			3		5
All Saints Catholic High School (Aided)		3	0		2
Angram Bank Primary			3		
Anns Grove Primary	3	2	2	3	3
Arbourthorne Primary	3	2	4		3
Athelstan Primary			2	3	4
Ballfield Primary			3		3
Bankwood Primary		2	0	0	
Beck Primary		2	3	2	
Beighton Infants				3	
Birley Community College			0	1	
Birley Spa Community Primary		3	1	3	5
Bradfield Dungworth					2
Bradway Primary		3	2	3	3
Brightside Nursery Infant		3	4	5	5
Brookhouse Junior	3	4	4		5
Broomhall Nursery & Childrens Centre					2
Broomhill Infants		2	4	4	5
Brunswick Primary			3	4	
Busk Meadow Nursery/Infant CLOSED		1	0		
Byron Wood Primary				3	2
Carfield Primary		2	5	5	5
Carterknowle J				3	4
Charnock Hall Primary		1	0		
Chaucer Secondary			2	2	2
City Secondary					5
Clifford CE Infant			2	3	2
Coit Primary				2	
Concord Junior			2	2	3
Deepcar St John's CE Junior		3	0	2	
Dobcroft Infant		2	3	4	5
Dobcroft Junior		3	5	5	5
Dore Primary				4	5
Ecclesall CE Junior				2	2
Ecclesall Infant			1	3	2
Ecclesfield Primary		2	0	2	
Emmanuel Junior					4
Emmaus Catholic & CE Primary				1	
Firs Hill Primary	3	4	4	4	4
Firth Park Community Arts College	2	3	3	2	2
Fox Hill Primary			0	0	1
Gleadless Primary		1	0	2	2
Greengate Lane Primary		1	0		
Greenhill Primary			2	3	
Greenlands Junior		4	5	4	
Greenlands Nursery Infant		0	1	3	4
Grenoside Primary		2	2	3	
Greystones Primary		3	4	4	5
Halfway Infant					3
Halfway Junior			3	4	
Hallam Primary	3	3	4	3	4
Handsworth Grange Secondary					5

SchoolName	Date	2006	2007	2008	2009	2010
Hatfield Primary			3		1	3
Heritage Park			2	5	3	
High Green Primary				3	0	
High Storrs Secondary				1		
Hillsborough Primary						3
Hinde House Primary Phase		3	3	0	4	4
Hinde House Secondary Phase		3	1	2	2	3
Holt House Infant			3	3	3	
Hucklow Primary				0	2	3
Hunters Bar Infant				3	4	5
Hunters Bar Juniors			2	3	3	
Intake Primary			2	0	1	2
King Ecgbert Secondary		1	2	0		3
KS3 Access & Inclusion Centre			2	0	2	
Limpsfield Junior					1	
Longley Primary					3	5
Lound Infant				3	2	1
Lowedges Primary					4	
Lower Meadow Primary				3	5	5
Lowfield Primary			1	0	2	2
Loxley Primary				2	2	
Lydgate Infant				3	3	3
Lydgate Junior					3	3
Manor Lodge Primary				2	2	2
Marcliffe Primary			3	0		3
Meadowhead Secondary			1	3		4
Meersbrook Bank Primary			2	3	1	1
Meynell Primary			3	4	5	5
Monteney Primary			2	0		
Mosborough Primary				2	3	
Mundella Primary				3	4	4
Myers Grove					2	
Myrtle Springs Secondary CLOSED		1	0			
Nether Green Infants		3	0	0	2	5
Nether Green Junior		3	2	1		3
Newfield Secondary			0	0	1	1
Nook Lane Junior			3	3	3	
Norfolk Community Primary		2	3	3	3	4
Norfolk Park Primary			1	2	2	
Norton Free CE		2	0	0	2	
Notre Dame Catholic High School (Aided)			2	2		
Oughtibridge Primary				2	3	5
Owler Brook Nursery Infant			1	0	2	3
Parkwood High			0	0	4	3
Parson Cross CE Primary				1	2	2
Pipworth NIJ					4	4
Porter Croft C of E				2	1	1
Prince Edward Primary			3	4	5	
Pye Bank Trinity CE Primary		0	1	0	2	
Rainbow Forge Primary			3	3	3	
Reignhead Primary				1	3	
Rivelin Primary					5	
Royd Nursery/Infant						4
Sacred Heart			2	0	2	3
Sharrow Junior - USE SHARROW PRIMARY			3	0		
Sheffield High School				4	4	4
Shirecliffe Junior CLOSED		3	2	0		

SchoolName	Date	2006	2007	2008	2009	2010
Shooters Grove						2
Southey Green Primary				3	5	4
St Anns RC					2	
St Catherine's Catholic Primary				4	4	5
St Joseph's RC				3	4	3
St Marie's RC Primary			2	3	3	
St Mary's Catholic Primary				0	2	3
St Patrick's Catholic Primary				2	4	
St Theresa's RC					3	3
St Thomas of Canterbury				3	3	
St Wilfrid's Catholic Primary School			4	5	5	5
Stocksbridge High School				2	2	2
Stocksbridge Junior						3
Stocksbridge Nursery Infant			2	2	2	
Stradbroke Primary				0	3	4
Talbot Special School			1	0	1	
Tapton Secondary			2	1	2	
The Rowan Primary					4	4
Tinsley Junior					3	
Totley All Saints CE Primary		2	2	3	4	4
Totley Primary			3	3	5	5
Valley Park Primary		3	2	2		
Walkley Primary				2	3	4
Watermead Nursery/Infant			3	1		
Waterthorpe NI School					4	6
Westfield Sports College				0	2	
Westways Primary			2	0		3
Wharncliffe Side Primary			4	4	5	5
Whiteways Junior					3	2
Wincobank NI			1	2	2	
Windmill Hill Primary			0	0	0	2
Wisewood Primary					4	5
Wisewood Secondary			4	3	5	5
Woodhouse West Primary			3	0	3	3
Woodseats Primary			1	1		3
Woodthorpe Primary			4	5	5	5
Wybourn Primary		1	1	0		

	2006	2007	2008	2009	2010
No of 1 STAR	3	15	10	9	5
No of 2 STAR	5	26	22	32	18
No of 3 STAR	11	22	28	33	26
No of 4 STAR	0	7	13	22	18
No of 5 STAR	0	0	6	13	25
No of Gold STAR	0	0	0	0	1
Total number of STARs reviews	19	70	79	109	93

	2006	2007	2008	2009	2010
No of 1 STAR	16%	21%	13%	8%	3%
No of 2 STAR	26%	37%	28%	29%	20%
No of 3 STAR	58%	31%	35%	30%	29%
No of 4 STAR	0%	10%	16%	20%	20%
No of 5 STAR	0%	0%	8%	12%	28%
No of Gold STAR	0%	0%	0%	0%	1%
	100%	100%	100%	100%	100%

Travel4Life

Background

The overall intention of Travel4Life is to help address the determinants of obesity in families. It's a new project which involves working intensively with schools in target areas of Sheffield to promote active travel. Walking and cycling to and from school are convenient ways to reach recommended exercise targets. We offer a programme of activities including assemblies, walk to school breakfasts and curriculum sessions such as geography and IT

The Travel4Life package aims to improve people's understanding of the need for healthy and active lifestyles through the delivery of education and information sessions to children and families. We want to use the information we collect from children, parents and teaching staff to help increase opportunities for walking and cycling through implementation of practical engineering schemes in and around schools.

Schools were prioritised using two criteria, health priority, based on information from NHSS and High Car Use (based on schools with car use over 50%, data from the January 2008 School Census).

Schools involved – Sept 2009/July 10

Marlcliffe Primary - Health Priority
Hartley Brook Primary - Health Priority
St Catherine's Primary - Health Priority

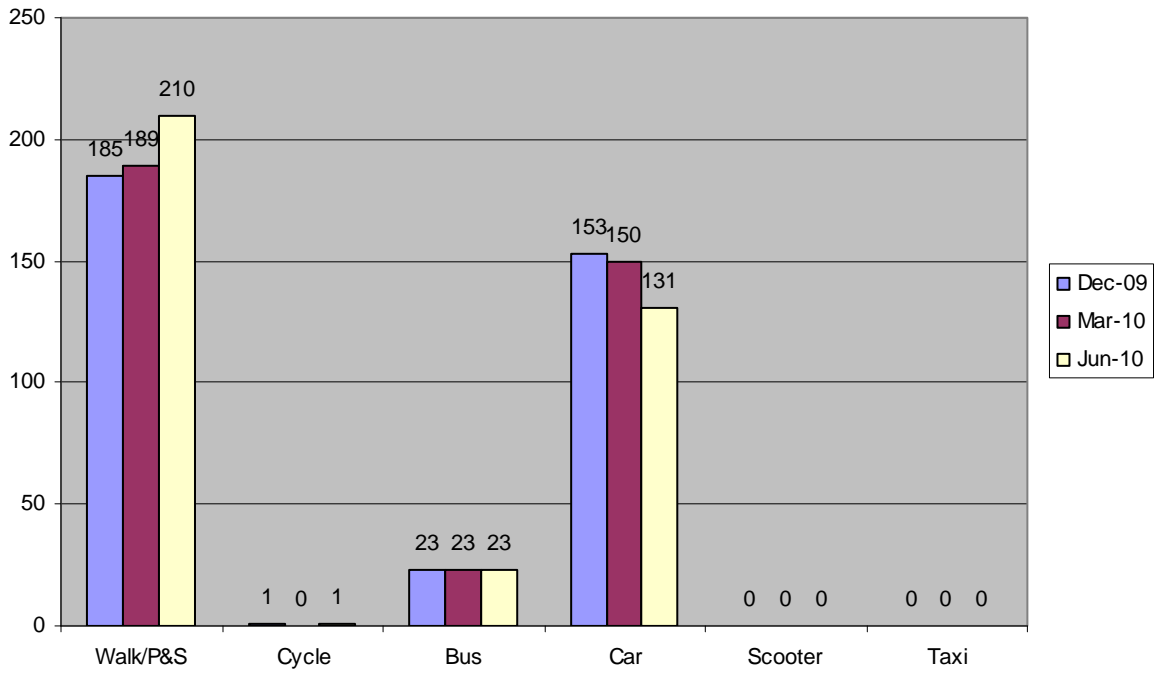
Hallam Primary - High Car Use school
Oughtibridge Primary - High Car Use school
Dore Primary - High Car Use school
Dobcroft Junior - High Car Use school
Dobcroft Infants - High Car Use school
Nether Green Infants - High Car Use school

Data

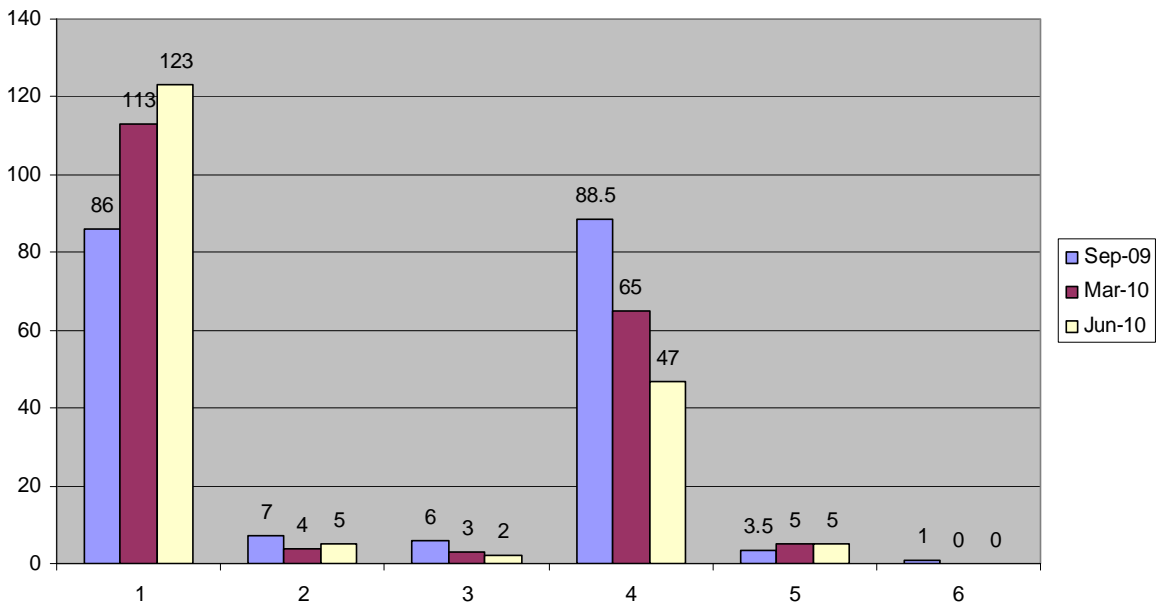
The School Travel Team has carried out 'hands up' surveys with pupils before, mid-term and post delivery of activities in schools. Returned data has shown an overall increase in walking and cycling and decrease in car use in the 9 targeted schools.

Overall levels of walking and use of Park & Stride sites showed an increase of up to 22% with car use decreasing by approximately 21%. Cycling and use of public transport remained fairly constant in all schools.

Hallam Comparison Table



Nether Green Comparison Table

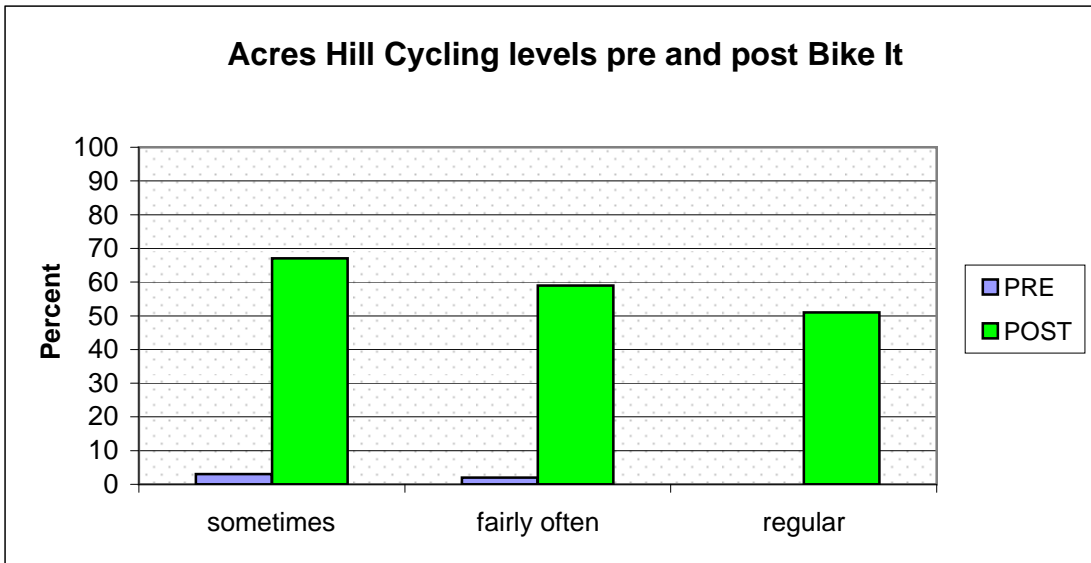


Programme of work

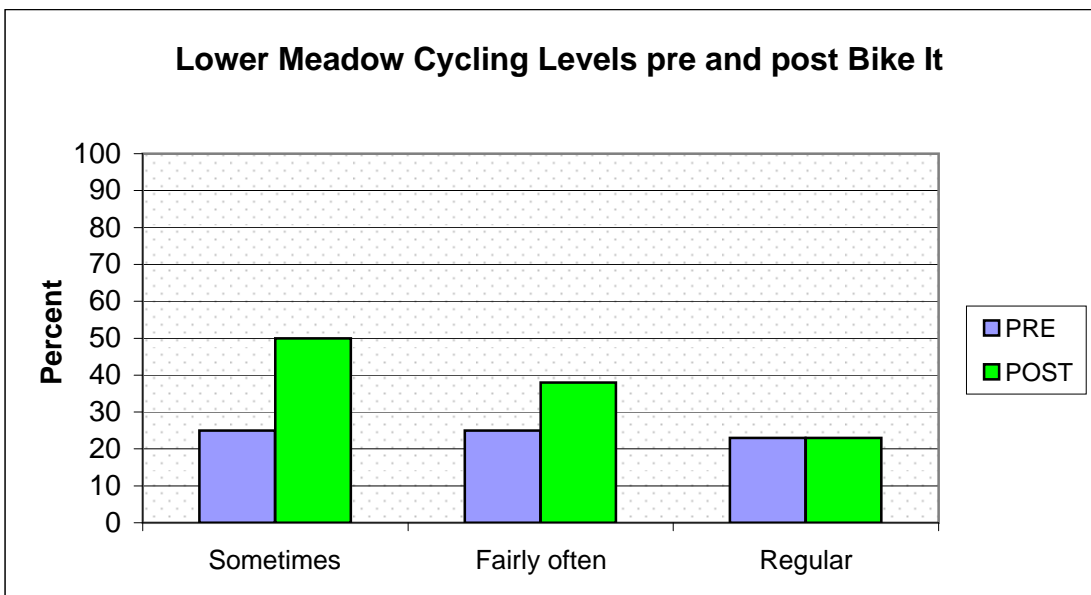
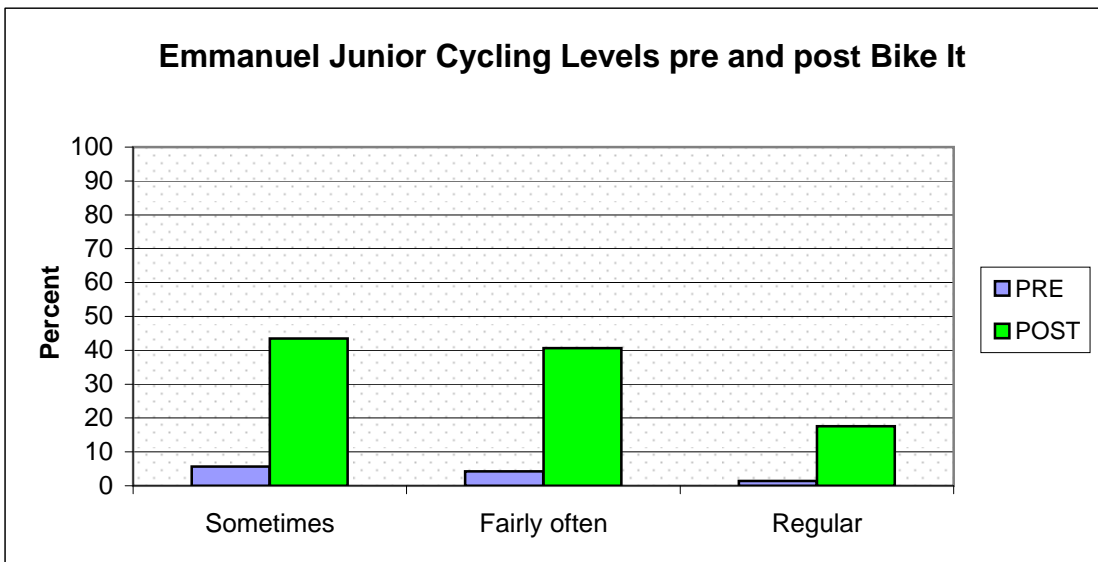
Travel4Life suggested programme of activities						
Overall aims of programme	Raise awareness of the benefits of healthy and active lifestyles through the delivery of education sessions with particular focus on how walking and cycling to school can help to meet daily exercise targets	Increase opportunities for walking and cycling through implementation of practical schemes in and around the target schools	To Identify barriers to using sustainable modes of travel to school through informal discussion sessions with students/school staff/governors and parent/carers	Investigate options for engineering projects around the locality of the school	Link to Eco Schools, Sustainable Schools, Healthy schools and other related agendas	
Initiatives						
Walking Buses Park&Stride	Support schools to set up WB and P&S options As needs arise					
Wow or Walk to school week	School actively partakes in at least one walking initiative					
JRSOs	Schools to have Junior Road Safety Officers set up in school					
Pedestrian Training	TBC. Schools with high accidents, able to train staff to continue training - funding for training in these schools has been provided by SLC4L					
Cycle training	Available for all Y5/Y6 pupils combined with Dr Bike sessions - has to be arranged through school Promote family ride in school - perhaps after school. Led by Pedal Pushers if needed. Family cycle training & staff					
Dr Bike	Dr Bike sessions to ensure students cycles are in a road worthy condition At schools discretion					
	Sessions delivered				Date	
Whole School	Introductory assembly with MOMO Theatre group separate performance for each key stage at the beginning of the programme					
Whole School	STT led Hands Up Monitoring sessions over lifetime of project 1 per term and 1 after project has finished (same time as first one). Need to try & do on days with similar weather.					
Whole School	Healthy breakfast reward for families walking & cycling to school Termly at schools discretion					
Staff	Brief discussion & introduction of project					
Parents/carers	STT led discussion groups to identify barriers/perceptions about walking/cycling to school At least one during the lifetime of the project at the schools discretion (could be linked to healthy breakfast, parents evening, display of children's work)					

	Sessions delivered	Outline	Date
Y6	STT/Road Safety led geography session - transition & routes to secondary school		
Y5	STT led Geography session to help identify any future engineering measures. 1 Afternoon per class	Map work - 5/10 minute walk zones & plotting routes on maps and walk about outside school to determine 'walkability' of the area using pedometers	
	Followed by Rollapalluza or Turbo Trainer activity for Y6&Y5 / KS2 1/2 day per class	Introduce the concept of cycling as an active and fun activity	
Y4	STT led printing session 1/2 day per class	STT led session exploring walking and cycling through art, Includes short STT led discussion about travelling to school	
Y3	STT led IT session 60 minutes per class	Creating posters using computers focussing on environmental and health aspects of walking or cycling to school, also safety perspective - posters can then be used for display around the school	
Y2	Footsteps the movie 1 Hour per class	Children make their own RS movie - needs hall space and requires parental permission re filming - no images are taken away from school	
Y1	Footsteps the movie 1 Hour per class	Children make their own RS movie - needs hall space and requires parental permission re filming - no images are taken away from school	

May 2009 to July 2010



January 2009 to July 2009



Sustainable Modes of Travel to School Schemes
Total £40,000 from LTP

Appendix F

School	Problem / suggestion / comment	Suggested by	Date Requested	Cost	Date Actioned
Abbeydale Primary School	Glen road 2 way for cyclists (currently 1 way)	Head teacher	Jan 2010		
City School	Cycle path through Richmond Park	Steve Roberts/pupils	November 2009		
Dobcroft Junior School	Cycle parking	School council & STP champion	April 2010	£2500	
Oughtibridge Primary School	Cycle parking	School council & STP champion	April 2010	£1500	
Springfield Primary School	New path to pedestrian entrance to avoid flooding	School Council & Head teacher through STP consultation	April 2010	£3000	
St Marys	Cycle storage		June 2010	£500	

Promotion and Publicity
Total £10,000 from LTP

This money will be spent on WoW resources (badges, charts), Walk to School resources, Award ceremony (photos, catering, trials display, frames, pens etc), new Your Sheffield article,